

**CLEARFIL™ SE Protect**  
DENTAL BONDING AGENT

Flow Chart Sheet



KURARAY MEDICAL INC.  
1621 Sakazu, Kurashiki,  
Okayama 710-0801, Japan

**Case A**

Direct restorations using light-cured composite resin or compomer

**Case B**

Cavity sealing as a pretreatment for indirect restorations

**Case C**

Treatment of hypersensitive and/or exposed root surfaces

**Case D**

Intraoral repairs of fractured crowns/bridges made of porcelain, hybrid ceramics or composite resin using light-cured composite resin

**Case E**

Surface treatment of prosthetic appliances made of porcelain, hybrid ceramics and cured composite resin

**Case F**

Core build-ups using light- or dual-cured composite resin

**Case G**

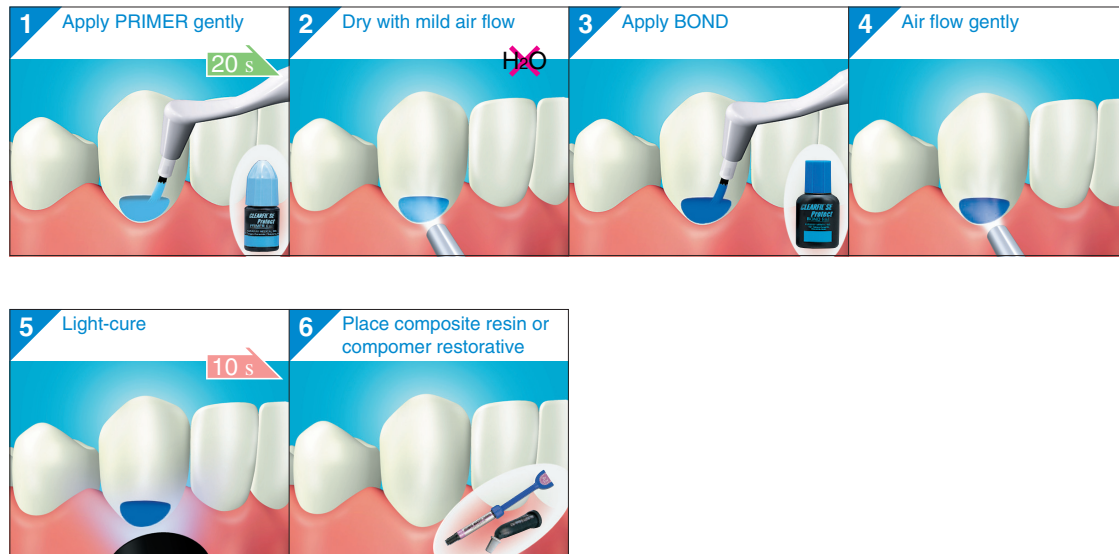
Cavity sealing under amalgam restorations

**CLEARFIL™ SE Protect** KURARAY MEDICAL INC.  
DENTAL BONDING AGENT

**Case A**

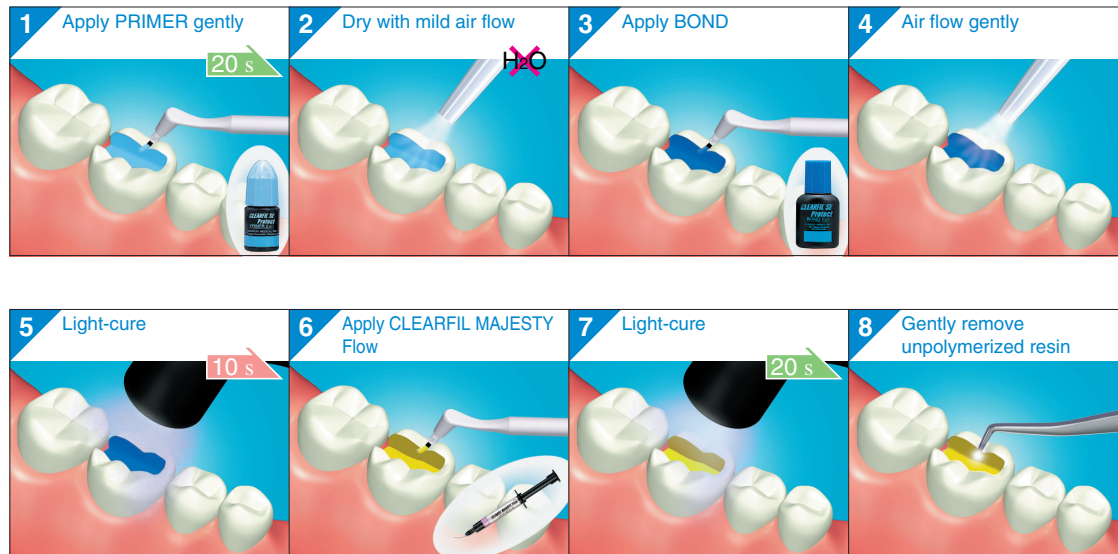
**Direct restorations using light-cured composite resin or compomer**

**A**



**Case B**

**Cavity sealing as a pretreatment for indirect restorations**



**Case C**

**Treatment of hypersensitive and/or exposed root surfaces**



**CLEARFIL™ SE Protect** KURARAY MEDICAL INC.  
DENTAL BONDING AGENT

**Case D**

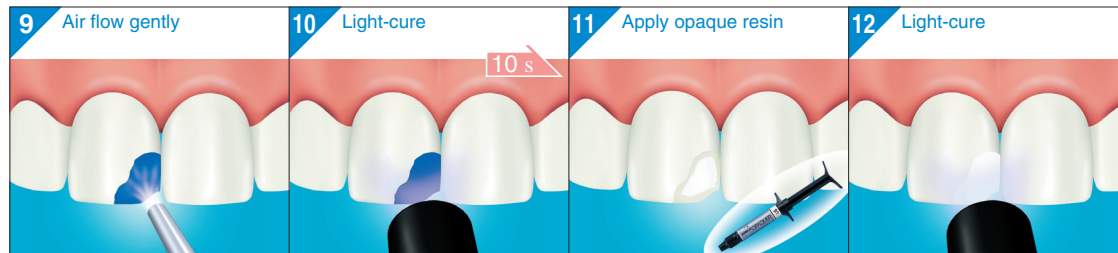
**Intraoral repairs of fractured crowns/bridges made of porcelain, hybrid ceramics or composite resin using light-cured composite resin (1/2)**



**CLEARFIL™ SE Protect** KURARAY MEDICAL INC.  
DENTAL BONDING AGENT

**Case D**

**Intraoral repairs of fractured crowns/bridges made of porcelain, hybrid ceramics or composite resin using light-cured composite resin (2/2)**



**CLEARFIL™ SE Protect** KURARAY MEDICAL INC.  
DENTAL BONDING AGENT

**Case E**

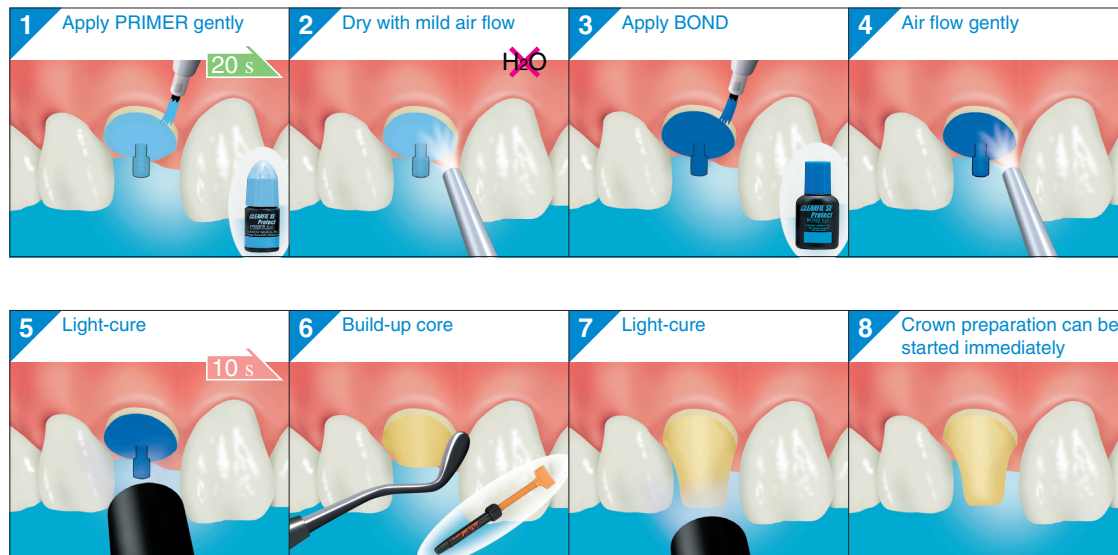
**Surface treatment of prosthetic appliances made of porcelain, hybrid ceramics and cured composite resin**



**CLEARFIL™ SE Protect**  
DENTAL BONDING AGENT KURARAY MEDICAL INC.

**Case F**

**Core build-ups using light- or dual-cured composite resin**



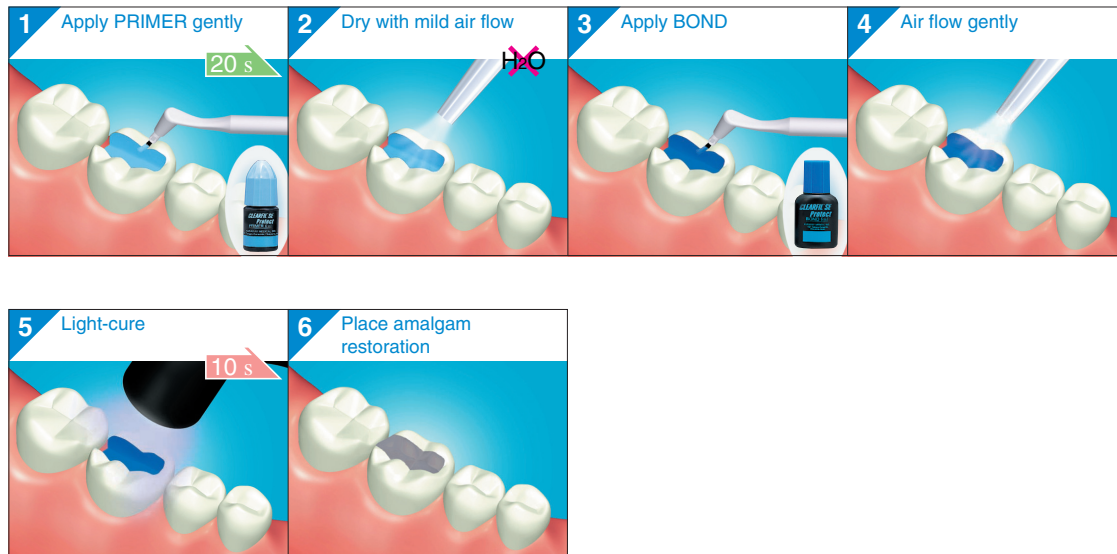
F



**CLEARFIL™ SE Protect** KURARAY MEDICAL INC.  
DENTAL BONDING AGENT

**Case G**

**Cavity sealing under amalgam restorations**



**G**