



PARADISE DENTAL TECHNOLOGIES

Creators of the Montana Jack® and Innovators of Dental Product Design

Wingrove™ Titanium Implant R900 "Go-To" Set



Blades are solid USA medical grade titanium. The set includes three specially designed instruments for safe and compliant implant maintenance; Wingrove B5-6 Ti R661, Wingrove L3-4 Ti R680, Wingrove N128B-L5 mini Ti R693 (tips are the exact dimensions for screws or exposed threads) plus a T216 EasyView probe, a T005A-F FlipTop™ cassette and a dedicated Diamond Head Ceramic Stone for your R900 "Go-To" set. The best instrument selection to efficiently maintain narrow/wide-based implants, locator/ball attachments, full arch fixed prosthesis/supra structures, Hadar bars and exposed threads.

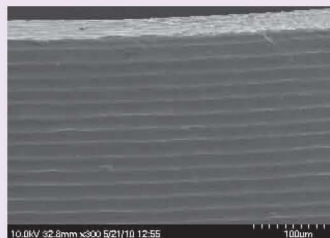
Why use PDT's titanium?

- PDT's uniquely processed and tested Rockwell C hardness 31 titanium, doesn't scratch implants and can be sharpened.
- Design specific for all implantology maintenance.
- Eliminates the risk of infection from trace elements left behind that can alter biocompatibility.
- Thinner more durable blades to dislodge calculus and cement that can lead to peri-implant disease.

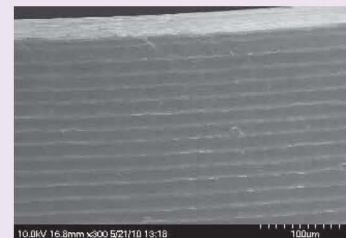


References are listed online at www.pdtdental.com under the Wingrove™ Implant Instrument section.

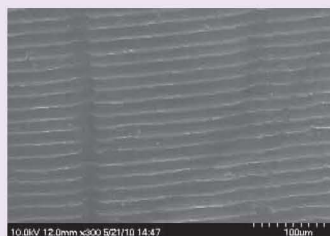
Microscopic view of an implant before and after using a PDT Ti Wingrove™ Scaler, a competitor Ti implant scaler and a plastic implant scaler



Sybron implant surface SEM control photo



Implant surface after using a PDT Ti Wingrove™ Scaler



Implant surface after using a hardened, competitor Ti scaler



Debris left on implant surface from a plastic scaler

Photos courtesy of Dr. J Driver UM Division of Biological Sciences 2010.